

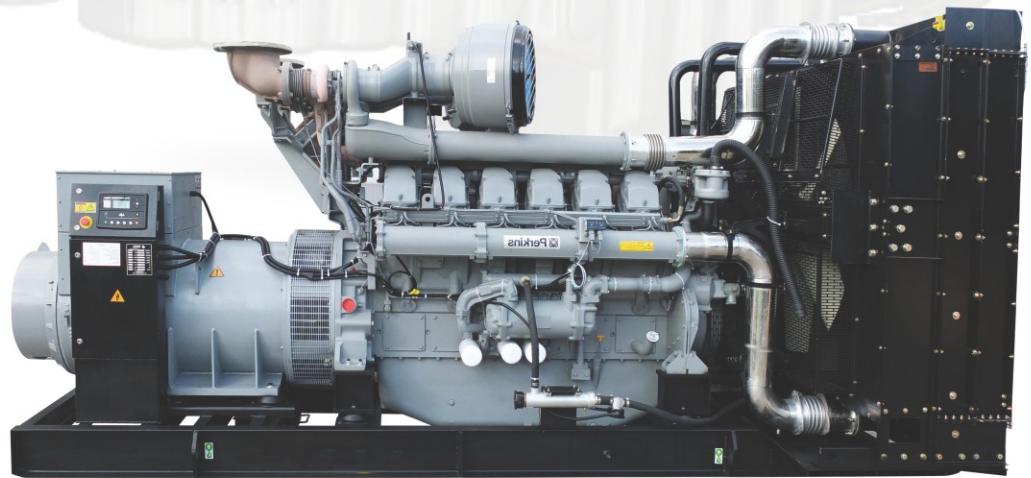
INTERGEN[®]

GENSET

Powered by



Perkins Power Generation
Diesel Generator Sets



Unbeatable range of power solutions™

50 Hz @ 1500RPM, 13 - 2250KVA



Powered by Perkins 13 - 2250KVA

Genset Model	Prime Power		Engine Model	COO	Cyl	Fuel Consumption @100% Load (L/hr)	Stamford Model	Dimensions L x W x H (mm)		Weight (kg)	
	KVA	KW						Open	Silent	Open	Silent
INT13P	13	10	403A-15G1	CHINA	3	3.67	PI044G	1200X750X1200	1800x1000x1180	430	780
INT20P	20	16	404A-22G1	CHINA	4	5.3	PI144D	1300X750X1200	1800x1000x1180	500	880
INT30P	30	24	1103A-33G	INDIA	3	7.2	PI144G	1500X800X1200	2300x1100x1240	700	1200
INT45P	45	36	1103A-33TG1	INDIA	3	7.2	UCI224D	1600X800X1250	2300x1100x1240	840	1350
INT60P	60	48	1103A-33TG2	INDIA	3	14.6	UCI224E	1700X800X1250	2300x1100x1240	890	1370
INT65P	65	52	1104A-44TG1	CHINA	4	14.8	UCI224F	1900X900X1320	2300x1100x1240	970	1460
INT80P	80	64	1104A-44TG2	CHINA	4	18.7	UCI224G	1900X900X1320	2300x1100x1240	1010	1500
INT100P	100	80	1104C-44TAG2	CHINA	4	22.6	UCI274C	1900X900X1320	2300x1100x1290	1060	1500
INT135P	135	108	1106A-70TG1	CHINA	6	30.28	UCI274E	2350X950X1520	2800x1100x1470	1480	1880
INT150P	150	120	1106A-70TAG2	CHINA	6	33.4	UCI274F	2350X950X1520	2800x1100x1800	1580	2060
INT180P	180	144	1106A-70TAG3	CHINA	6	41.6	UCI274G	2450X950X1570	2800x1100x1800	1650	2220
INT200	200	160	1106A-70TAG4	CHINA	6	45.8	UCI274H	2450X950X1570	2800x1100x1800	1700	2270
INT250	250	200	1506A-E88TAG3	USA	6	55.5	UCD1274K	2700X1100X1850	3800x1300x2000	2300	3380
INT300	300	236	1506A-E88TAG5	USA	6	64.9	HCI444D	2900X1150X1850	4200x1500x2100	2680	3790
INT350	350	280	2206C-E13TAG2	USA	6	75	HCI444E	3300X1150X2100	4200x1500x2100	3240	4350

Genset Model	Prime Power		Engine Model	COO	Cyl	Fuel Consumption @100% Load (L/hr)	Stamford Model	Dimensions L x W x H (mm)		Weight (kg)	
	KVA	KW						Open	Silent	Open	Silent
INT400	400	320	2206C-E13TAG3	USA	6	85	HCI444F	3300X1150X1851	4200x1500x2100	3290	4400
INT450	450	360	2506C-E15TAG1	USA	6	99	HCI544C	3500X1250X2120	4800x1700x2280	3800	5500
INT500	500	400	2506C-E15TAG2	USA	6	106	HCI544D	3500X1250X2120	4800x1700x2280	3840	5590
INT600	600	480	2806C-E18TAG1A	USA	6	129	HCI544E	3500X1250X2120	4800x1700x2280	3940	5690
INT650	650	520	2806A-E18TAG2	USA	6	132	HCI544F	3500X1250X2120	4800x1700x2280	4150	5900
INT750	725	600	4006-23TAG2A	INDIA/UK	6	155	HCI634G	4100X1750X2210	5800x2250x2500	4750	7250
INT800	800	640	4006-23TAG3A	INDIA/UK	6	172	HCI634G	4100X1750X2210	5800x2250x2500	4800	7300
INT1000	1000	800	4008TAG2A	INDIA	8	215	HCI634J	4700X2050X2300	-	7611	12611
INT1250	1250	1000	4012-46TWG2A	INDIA/UK	12	258	PI734B	5100X2220X2300	-	9154	19154
INT1500	1500	1200	4012-46TAG2A	INDIA/UK	12	310	PI734C	5100X2220X2350	-	11580	21580
INT1710	1705	1368	4012-46TAG3A	INDIA/UK	12	370	PI734E	5100X2220X2400	-	11580	21580
INT1850	1850	1480	4016TAG1A	INDIA/UK	16	383	PI734E	6600X2250X2750	-	16500	26500
INT2000	2000	1600	4016TAG2A	INDIA/UK	16	434	PI734F	6600X2250X2750	-	16500	26500
INT2250	2250	1800	4016-61TRG3	INDIA/UK	16	470	PI734H	6900X2250X2751	-	17500	27500

Prime power tersedia tanpa terbatas jam pengoperasian sesuai dengan DIN 6271,BS55114 dan ISO 3046 dengan beban maksimal 10%

Standby power tersedia pada beban variabel hingga maksimum 500 jam selama satu tahun dimana 300 jam dapat digunakan terus menerus



PT INTERJAYA SURYAMEGAH
SOLUTIONS FOR YOUR POWER & TRANSMISSION NEEDS

Head Office • Jl. Rungkut Industri III no. 45, Surabaya 60293 - Indonesia, **Telp. (031) 9985 0000**, Fax. (031) 9985 1477, E-mail: support@interjaya.com
Website: www.interjaya.com

Branch Office • Komplek Pergudangan Arcadia Blok G12 No. 10, Jl. Daan Mogot Km 21.5, Tangerang, **Telp. (021) 2900 6565**, Fax. (021) 2900 6547, 2900 6548
E-mail: ism@interjaya.com

• Irian Barat Pasar VII, Komplek Pergudangan Cemara No. 62, Percut - Medan, **Telp. (061) 800 32321**, 0851 0022 1150, Fax. (061) 800 32320
E-mail: ismedan@interjaya.com